

Pupil Premium Expenditure

2019-2020



Pupil Premium

The school receives a grant for the pupil premium which is based on the number of students either in receipt of free school meals (FSM) or who have been in receipt in the past and CLAs. The money is used alongside expenditure from current income to support a range of intervention strategies to help raise standards.

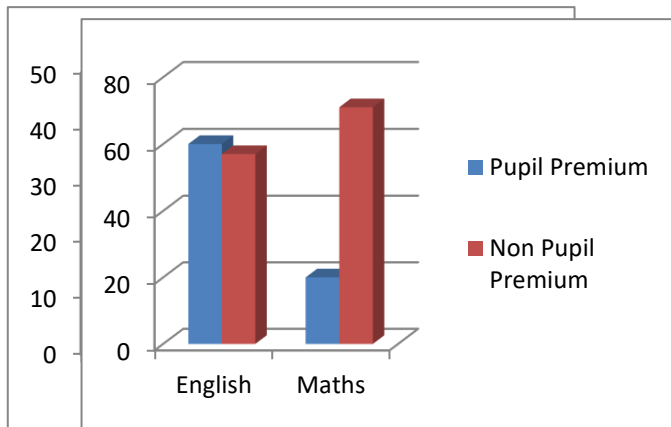
Pupil Premium Income

2017-2018	£14,960
2018-2019	£10,285
2019-2020	£18,279

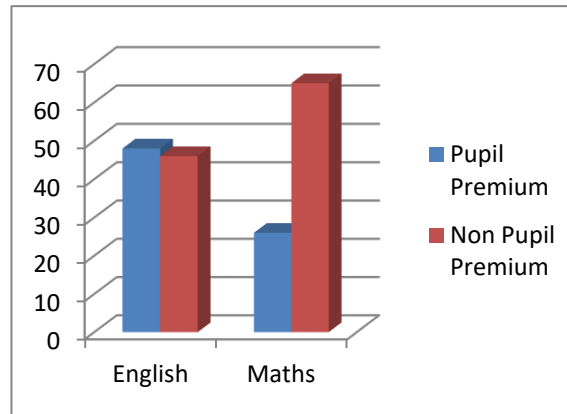
Pupil Premium Expenditure

Pupil Premium/Non Pupil Premium Progress in English and Maths

2017 – 2018



2018 – 2019

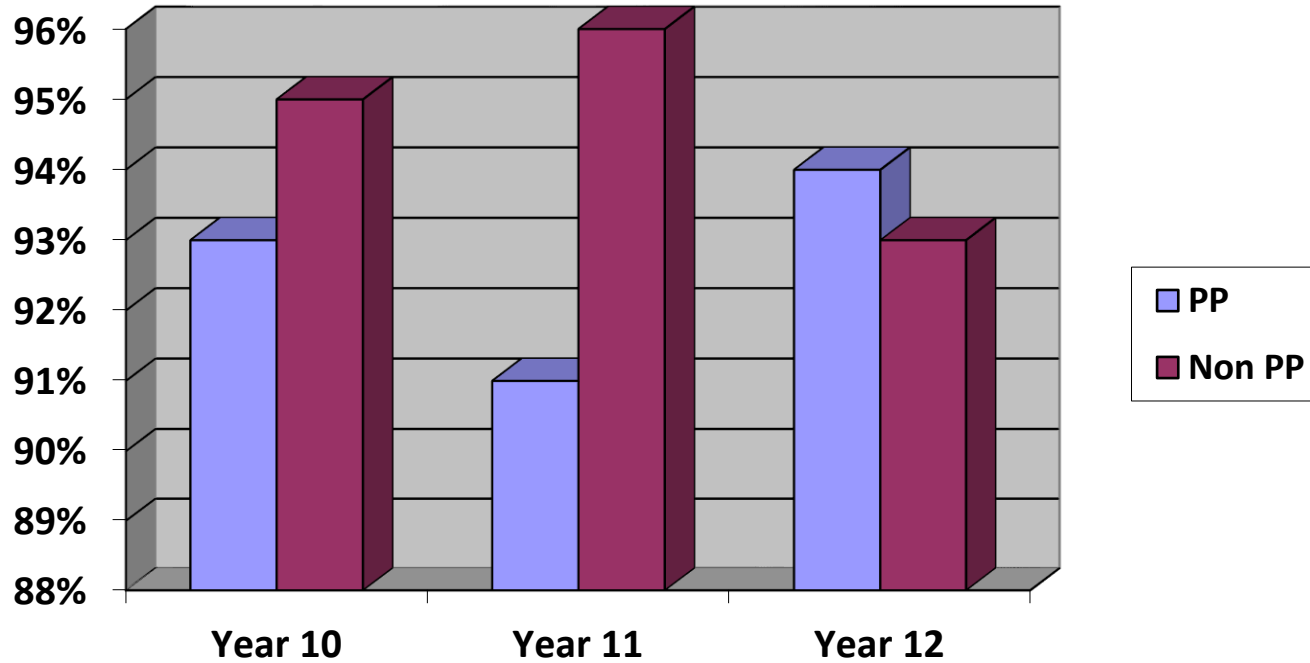


2019-20

**The gap between English PP and non-PP is not significant.
The gap in Maths continue to make good improvement.**

Pupil Premium Expenditure

Pupil Premium/Non Pupil Premium Attendance



Attendance has improved for the third consecutive year in 2019/20
The only gaps were very small and related to individual students.

Pupil Premium Expenditure

Expenditure Focused On Learning In The Curriculum	Number of Students	Impact
Additional staffing costs <ul style="list-style-type: none"> - Additional staffing in English and Maths (to allow blocking) - Alternative courses run by external providers - Reading books for all tutor groups/reading corner - Reading Programme (Form times) 	16 3 70 10	Improved progress in English and Maths Engagement and more appropriate provision Promote regular reading practice Improved engagement and access to the curriculum.
Small group support <ul style="list-style-type: none"> - Literacy Support - Reading interventions - Speech and Language Therapy - Social Skills 	2 in Year 11 6 15 5	50% achieved English target grade All students see an increase in reading age as part of the reading provision. Improved communication skills on reassessment Resilience scores show improvement on reassessment
Homework support	All	After school slot for general support and targeted interventions
Trips directly related to the curriculum <ul style="list-style-type: none"> - English - Creative Arts - Catering 	12 12 12 12	Participation of all students.

Pupil Premium Expenditure

- Expenditure Focused On Enrichment Beyond The Curriculum	Number Of Students	Impact
Trips not directly related to the curriculum - ie. Careers, PSHE,	12	No child left behind
Sports/Arts/Drama/Catering activities at lunchtime and after school	12 Registers to be kept	More opportunities for Out of School Hours Learning. District athletics Participation in local competitions Boxing Club
Expenditure Focused On Social, Emotional And Behavioural Issues	Number of Students	Impact
Additional Staffing Costs		
- Mentoring	40	Individual mentoring
- Social Skills (Counsellor)	12	Improved Behaviour and Safety -
- Rewards trips (Behaviour and attendance) - Rewards for good attendance - Rewards for progress and achievement - Rewards for improvement	12	Improved behaviour Attendance increase on previous year Better engagement in learning
Expenditure Focused On Families And The Community	Numbers of Students	Impact
Information for Parents on key topics	70	Better understanding of risks faced by teenagers